

Event Report

Date/Time Long at 1:38:26 PM April 14, 2020
 Trigger Source Geo: 0.040 in/s, Mic: 130.0 dB(L)
 Range Geo: 10.000 in/s
 Record Time 3.0 sec at 1024 sps
 Job Number: 1

Serial Number BA11047 V 10.72-8.17 BlastMate III
 Battery Level 6.0 Volts
 Unit Calibration January 10, 2020 by InstanTel
 File Name __TEMP.EVT

Notes

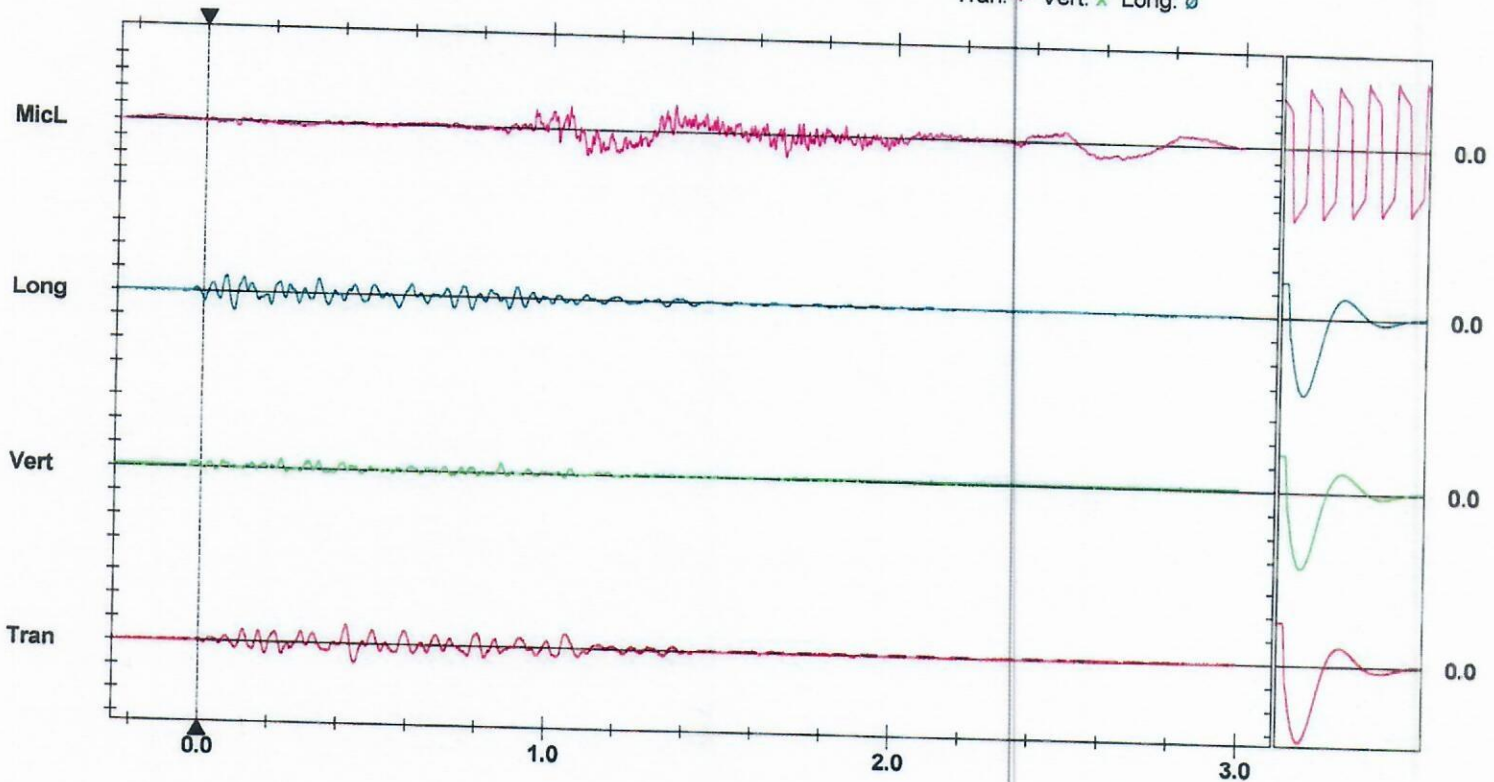
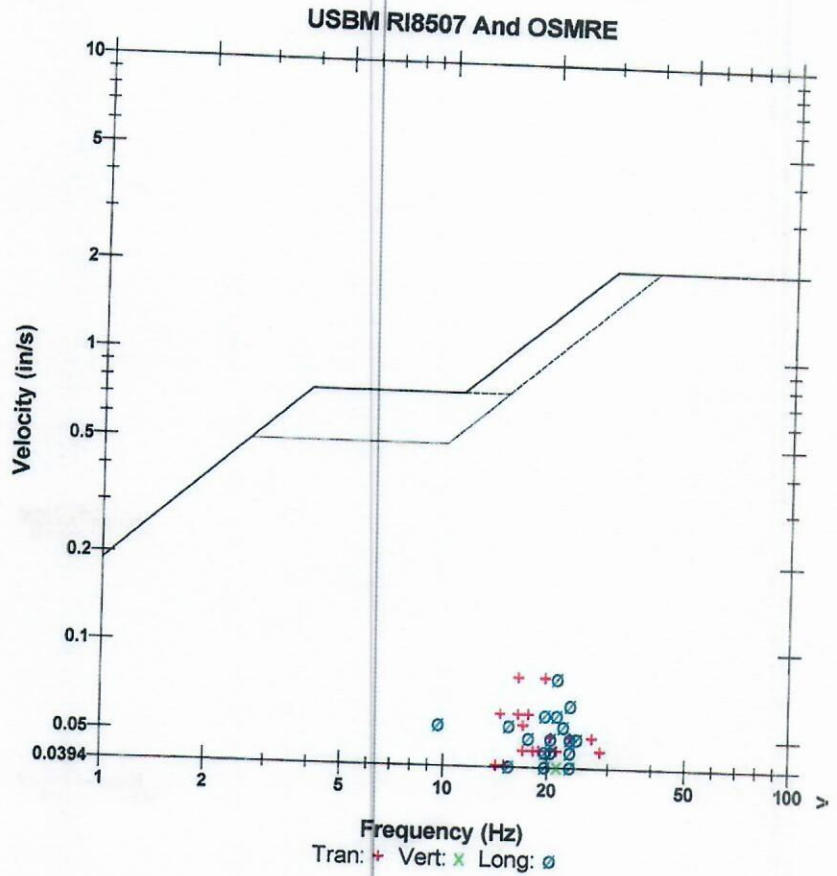
Location: N 43 05 59.9 W 089 13 32.4 .25 N
 Client: Bjoin Limestone Cottage Grove
 User Name: Cap Eadie
 General: 3019 Red Hawk Rd

Extended Notes

Microphone Linear Weighting
 PSPL 115.2 dB(L) at 1.359 sec
 ZC Freq 3.8 Hz
 Channel Test Passed (Freq = 20.1 Hz Amp = 663 mv)

	Tran	Vert	Long	
PPV	0.080	0.040	0.080	in/s
ZC Freq	20	21	21	Hz
Time (Rel. to Trig)	0.426	0.867	0.087	sec
Peak Acceleration	0.040	0.027	0.040	g
Peak Displacement	0.001	0.000	0.001	in
Sensor Check	Passed	Passed	Passed	
Frequency	7.4	7.4	7.4	Hz
Overswing Ratio	3.9	3.9	3.8	

Peak Vector Sum 0.083 in/s at 0.429 sec



Time Scale: 0.20 sec/div Amplitude Scale: Geo: 0.100 in/s/div Mic: 0.001 psi(L)/div
 Trigger = \blacktriangleleft \blacktriangleright

Sensor Check

Date/Time Tran at 1:38:12 PM April 14, 2020
 Trigger Source Geo: 0.040 in/s, Mic: 130.0 dB(L)
 Range Geo: 10.000 in/s
 Record Time 3.0 sec at 1024 sps
 Job Number: 1

Serial Number BA5798 V 10.72-4.32 BlastMate III
 Battery Level 6.4 Volts
 Unit Calibration July 10, 2019 by InstanTEL
 File Name _TEMP.EVT

Notes

Location: N 43 05 59.9 W 089 13 32.4 .34 S
 Client: Bjoin Limestone Cottage Grove
 User Name: Cap Eadie
 General: 2865 Busston Rd

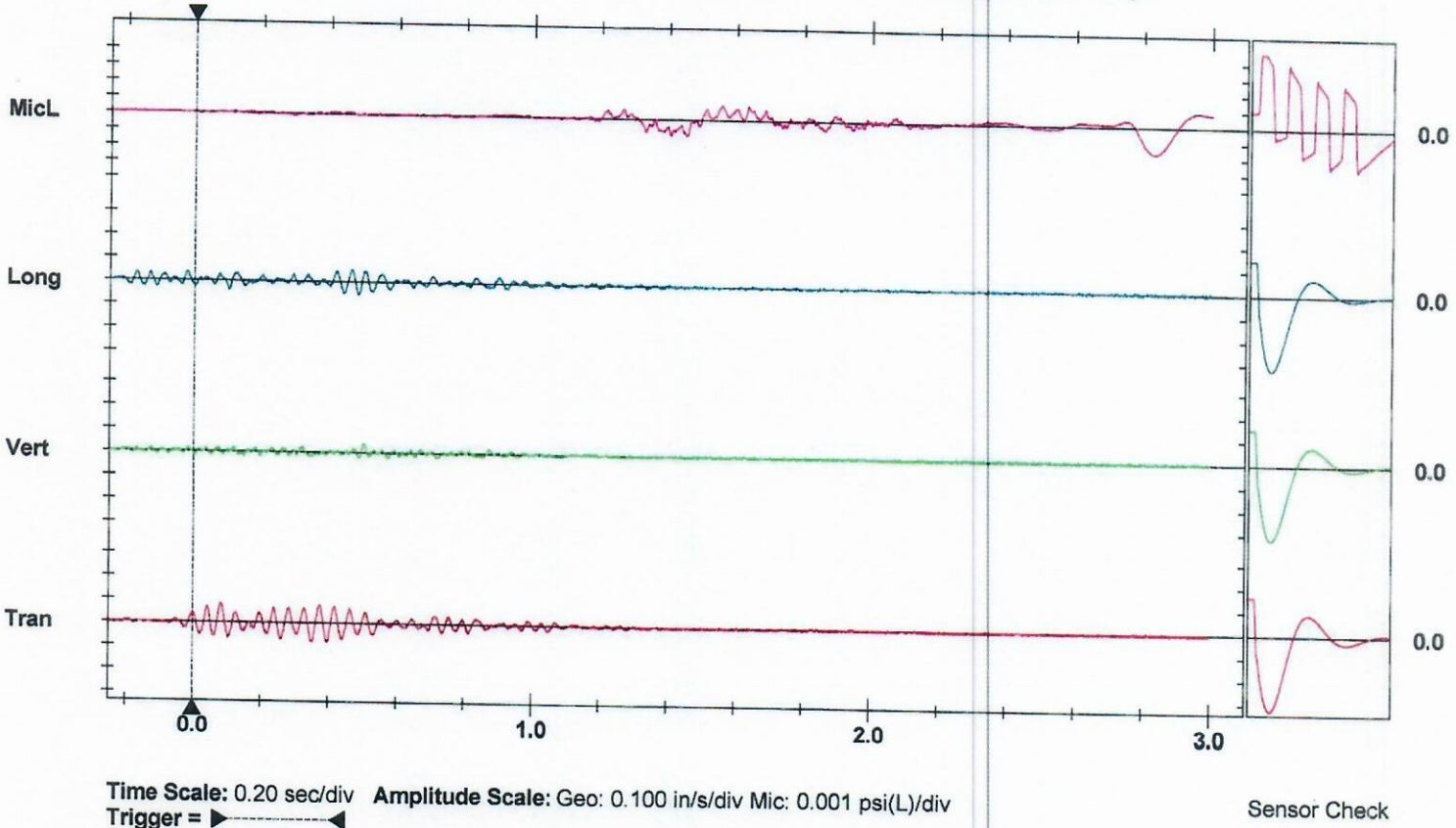
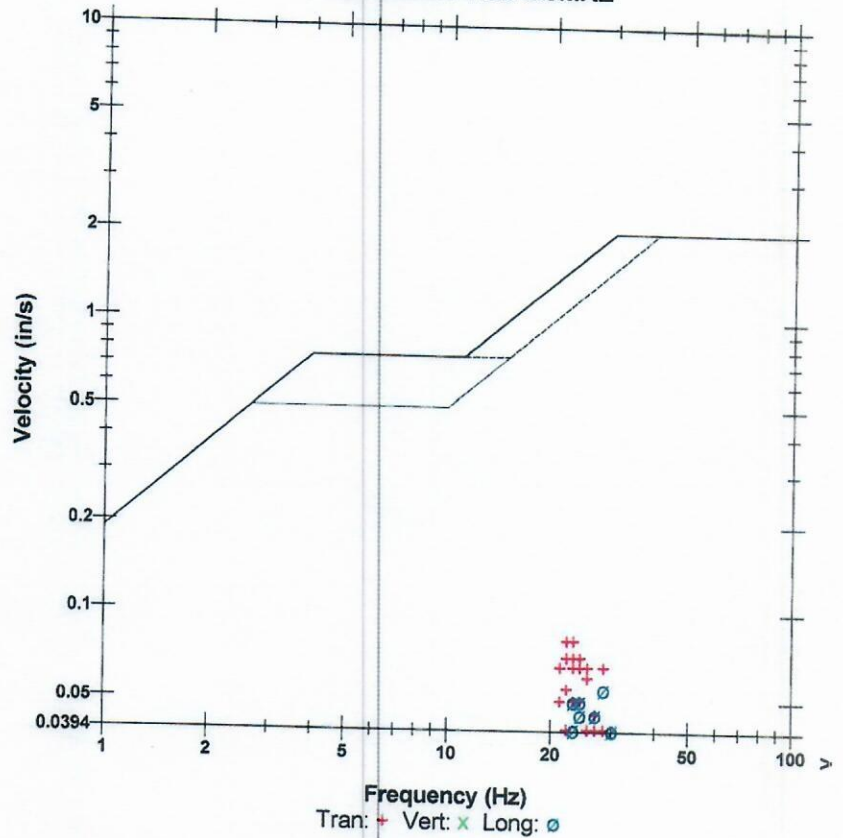
Extended Notes

Microphone Linear Weighting
 PSPL 115.4 dB(L) at 2.835 sec
 ZC Freq 4.1 Hz
 Channel Test Passed (Freq = 21.3 Hz Amp = 655 mv)

	Tran	Vert	Long	
PPV	0.080	0.035	0.055	in/s
ZC Freq	23	32	28	Hz
Time (Rel. to Trig)	0.082	0.500	0.482	sec
Peak Acceleration	0.040	0.027	0.027	g
Peak Displacement	0.001	0.000	0.000	in
Sensor Check	Passed	Passed	Passed	
Frequency	7.6	7.3	7.3	Hz
Overswing Ratio	3.4	4.2	4.5	

Peak Vector Sum 0.087 in/s at 0.442 sec

USBM RI8507 And OSMRE



Date/Time Tran at 1:38:25 PM April 14, 2020
Trigger Source Geo: 0.040 in/s, Mic: 130.0 dB(L)
Range Geo: 10.000 in/s
Record Time 3.0 sec at 1024 sps
Job Number: 1

Serial Number BA11291 V 10.72-8.17 BlastMate III
Battery Level 6.3 Volts
Unit Calibration December 2, 2019 by InstanTel
File Name __TEMP.EVT

Notes

Location: N 43 05 59.9 W 089 13 32.4 .33 SW
Client: Bjoin Limestone Cottage Grove
User Name: Cap Eadie
General:

Extended Notes

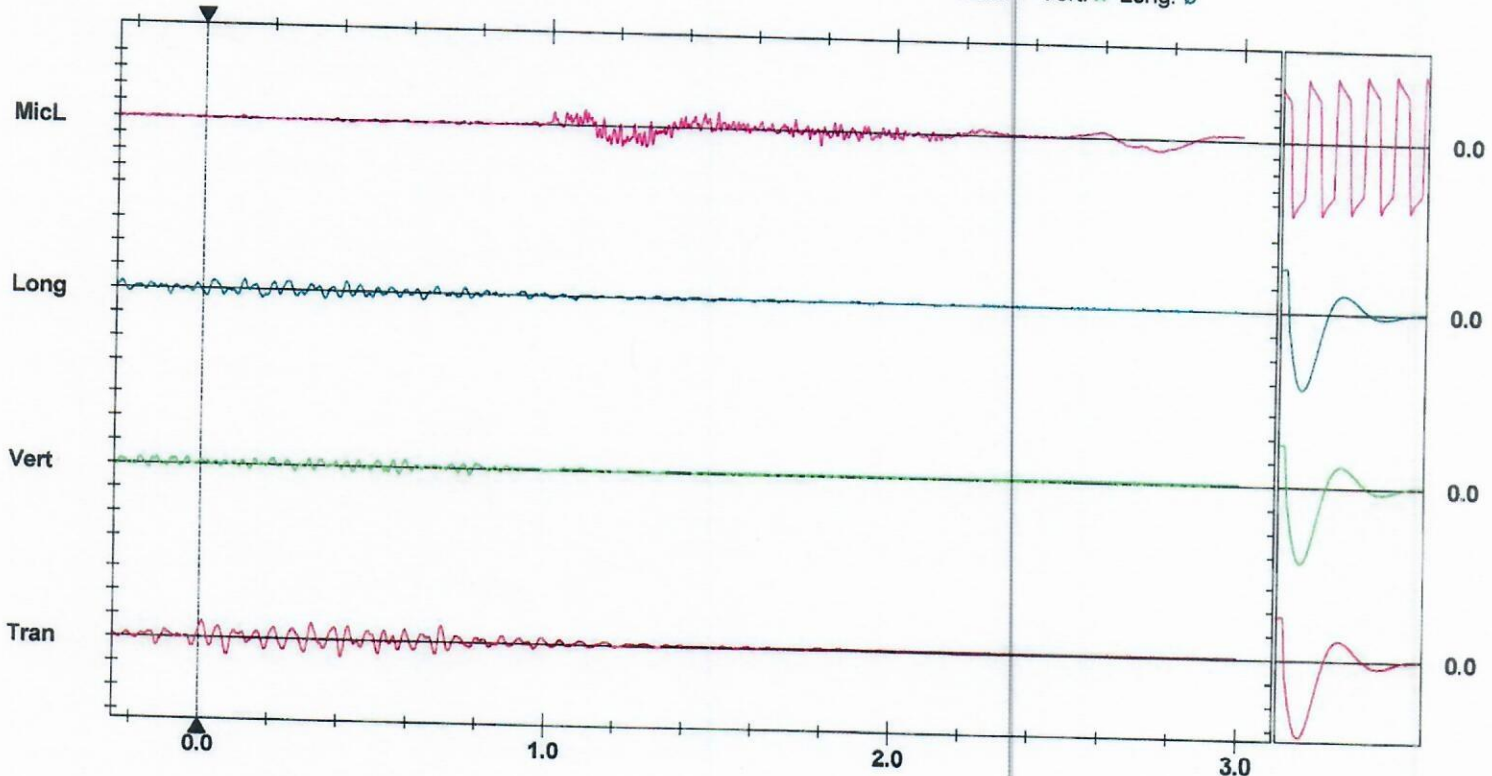
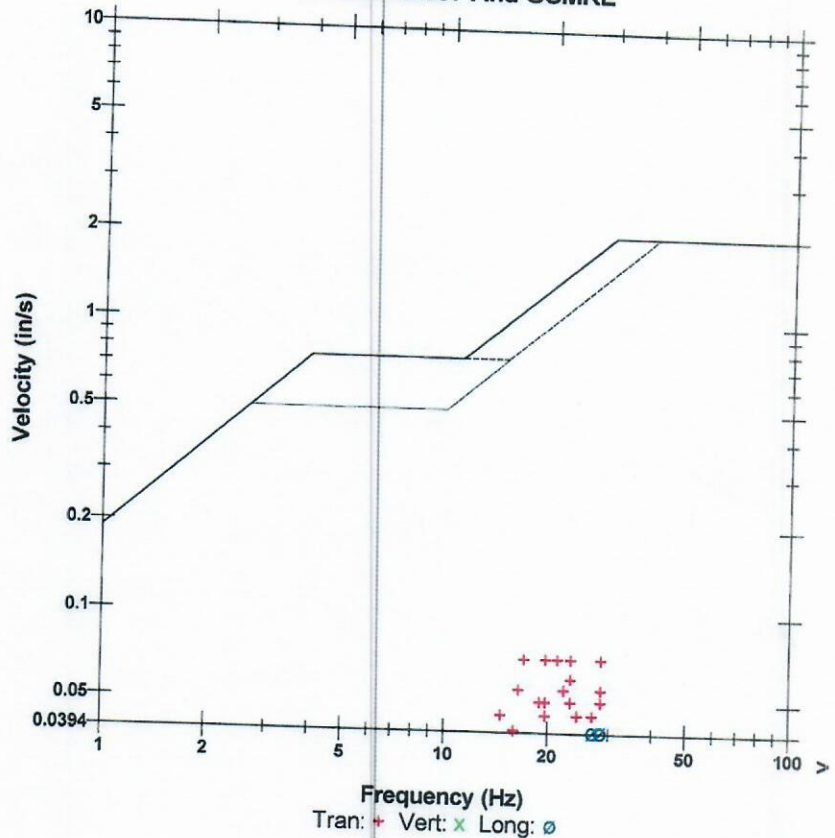
3001 Red Hawk Trail

Microphone Linear Weighting
PSPL 112.6 dB(L) at 1.278 sec
ZC Freq 12 Hz
Channel Test Passed (Freq = 20.1 Hz Amp = 680 mv)

	Tran	Vert	Long	
PPV	0.070	0.035	0.040	in/s
ZC Freq	17	30	27	Hz
Time (Rel. to Trig)	0.009	0.592	0.119	sec
Peak Acceleration	0.040	0.027	0.027	g
Peak Displacement	0.001	0.000	0.000	in
Sensor Check	Passed	Passed	Passed	
Frequency	7.5	7.6	7.4	Hz
Overswing Ratio	3.6	3.6	4.1	

Peak Vector Sum 0.081 in/s at 0.412 sec

USBM RI8507 And OSMRE



Time Scale: 0.20 sec/div **Amplitude Scale:** Geo: 0.100 in/s/div Mic: 0.001 psi(L)/div
Trigger =

Sensor Check