

Date/Time Long at 09:19:02 August 28, 2020
Trigger Source Geo: 0.020 in/s
Range Geo: 4.999 in/s
Record Time 5.0 sec at 1024 sps

Serial Number 3331 V 2.61 MiniMate
Battery Level 6.4 Volts
Unit Calibration February 22, 2020 by InstanTel
File Name E331ILZ8.JQ0
Post Event Notes
 Homburg
 Home Pit
 5410 Retana

Notes
 Location:
 Client:
User Name: Ahlgrimm Explosives
 Converted: August 28, 2020 15:10:25 (V 10.74)

Extended Notes

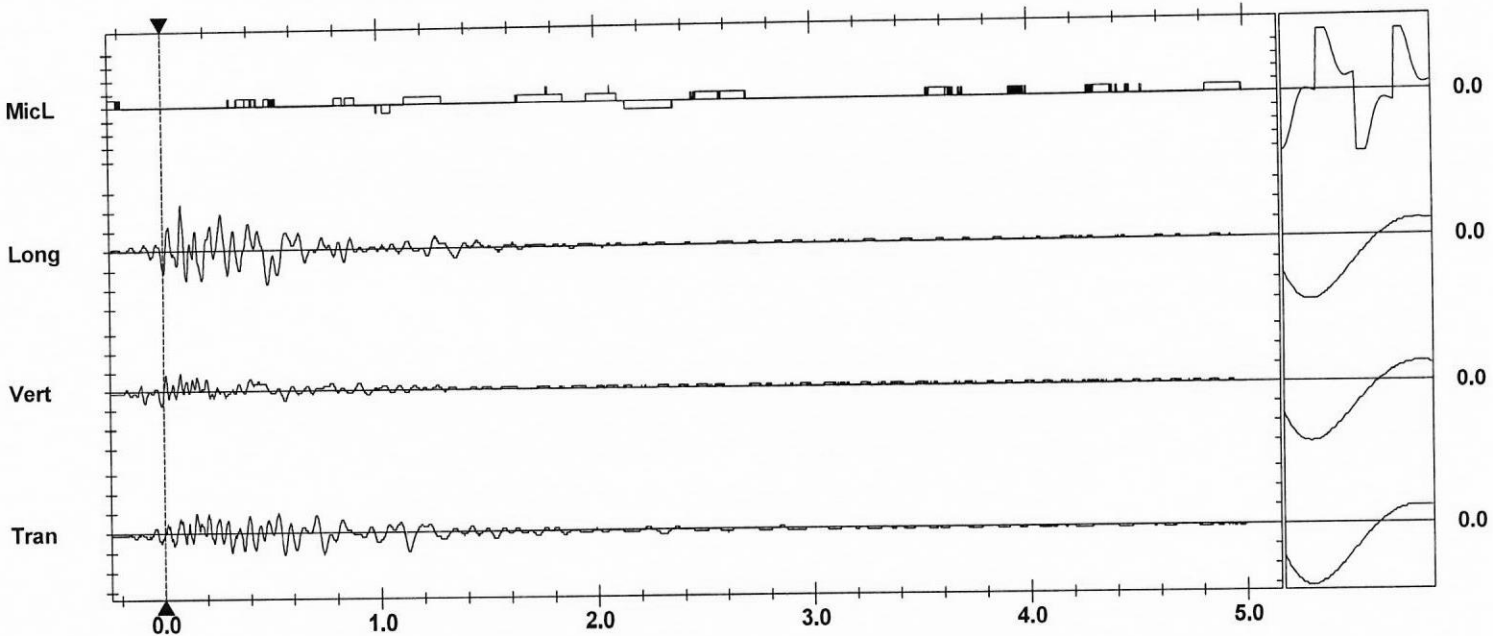
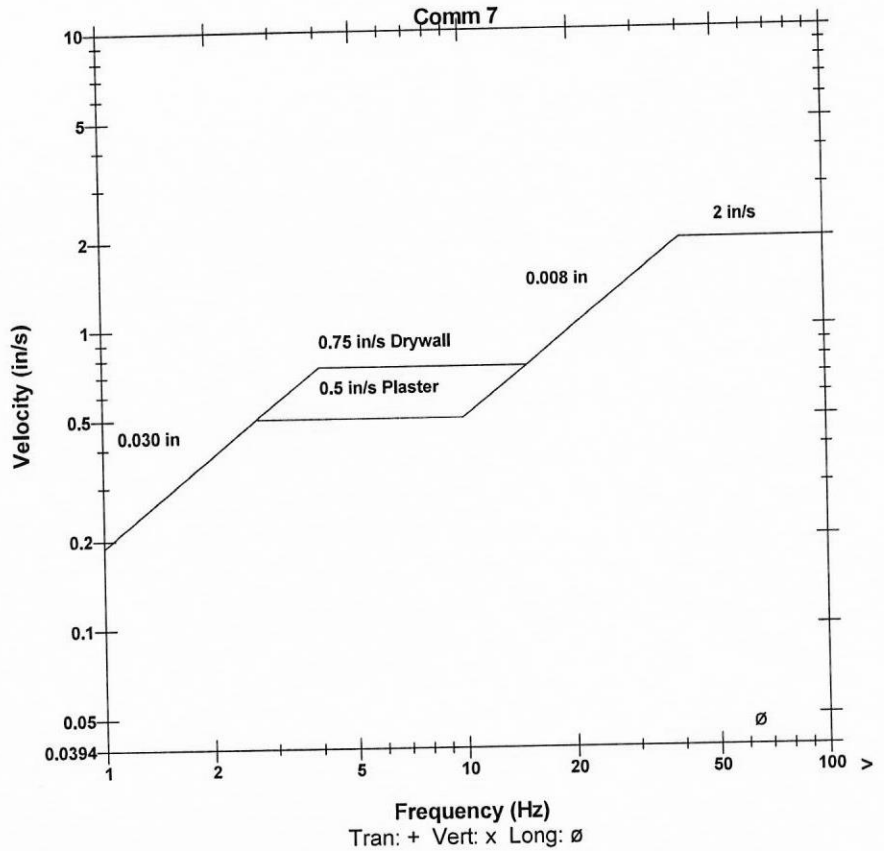
Microphone Linear Weighting
PSPL 106.0 dB(L) at 1.775 sec
ZC Freq 2.0 Hz
Channel Test Passed (Freq = 20.0 Hz Amp = 540 mv)

	Tran	Vert	Long	
PPV	0.023	0.020	0.048	in/s
ZC Freq	18	22	19	Hz
Time (Rel. to Trig)	0.556	0.079	0.086	sec
Peak Acceleration	0.013	0.013	0.020	g
Peak Displacement	0.000	0.000	0.001	in
Sensor Check	Passed	Passed	Passed	
Frequency	8.0	8.0	7.8	Hz
Overswing Ratio	3.8	3.5	3.8	

No trigger @ .02 in/sec on seis. # 4794 located at:
 5310 Greenbriar

No trigger @ .02 in/sec on seis. # 5358 located at:
 109 Thompson

Wisconsin Administrative Code



Time Scale: 0.20 sec/div **Amplitude Scale:** Geo: 0.020 in/s/div Mic: 0.001 psi(L)/div
 Trigger =

Sensor Check

Date/Time Long at 09:19:16 August 28, 2020
Trigger Source Geo: 0.020 in/s
Range Geo: 4.999 in/s
Record Time 5.0 sec at 1024 sps

Serial Number 4379 V 2.61 MiniMate
Battery Level 6.4 Volts
Unit Calibration February 7, 2020 by InstanTEL
File Name F379ILZ8.K40
Post Event Notes
 Homburg
 Home Pit
 Back Gate

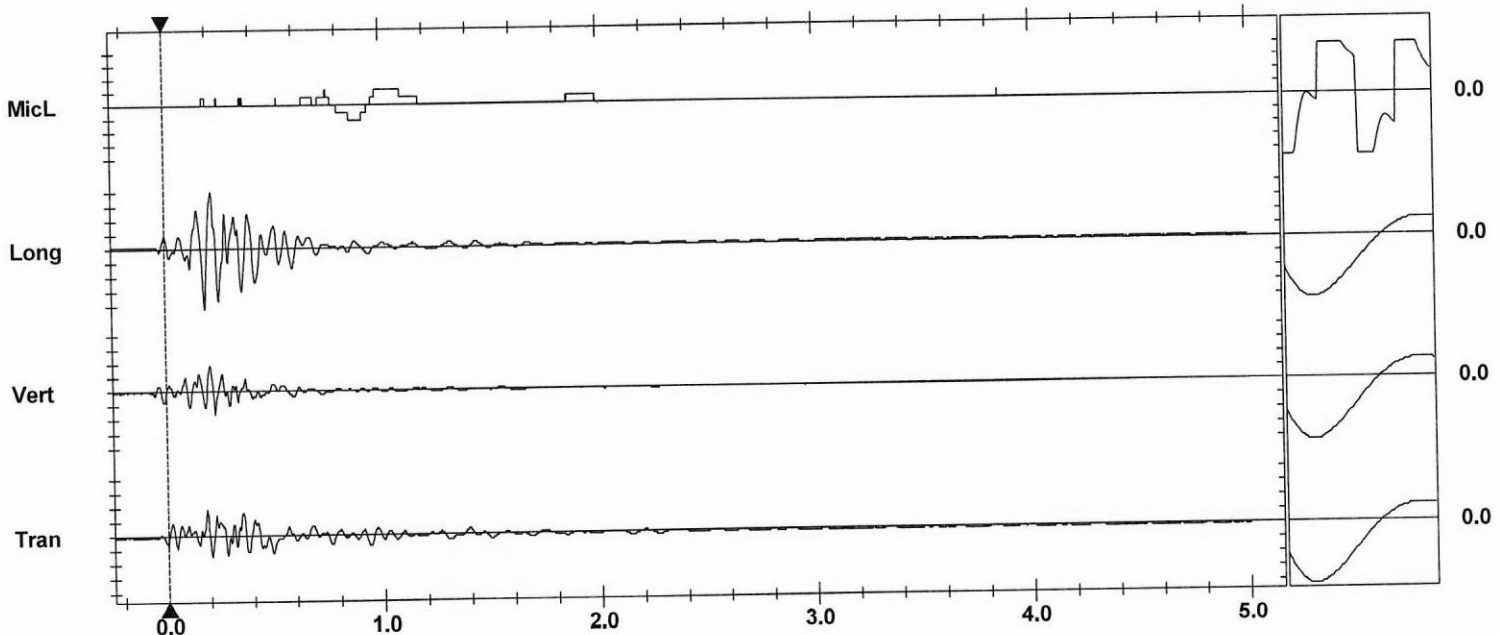
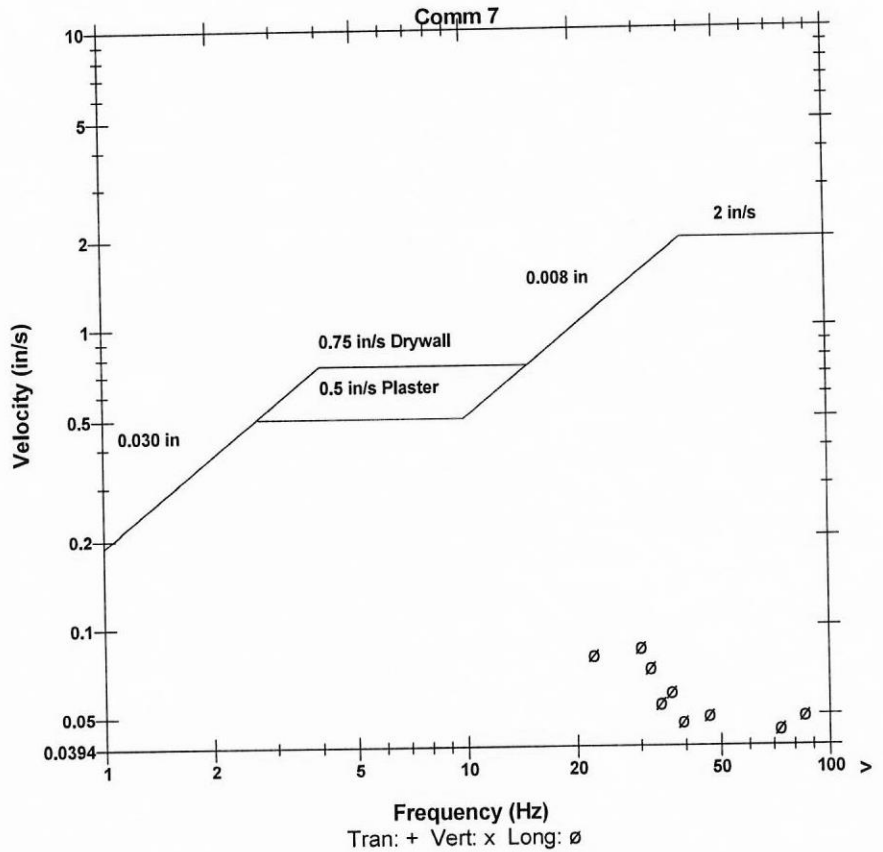
Notes
 Location:
 Client:
 User Name:
 Converted: August 28, 2020 15:08:27 (V 10.74)

Extended Notes

Microphone Linear Weighting
PSPL 106.0 dB(L) at 0.754 sec
ZC Freq 8.0 Hz
Channel Test Passed (Freq = 20.0 Hz Amp = 825 mv)

	Tran	Vert	Long	
PPV	0.038	0.038	0.085	in/s
ZC Freq	18	18	18	Hz
Time (Rel. to Trig)	0.184	0.205	0.187	sec
Peak Acceleration	0.013	0.013	0.027	g
Peak Displacement	0.000	0.000	0.001	in
Sensor Check	Passed	Passed	Passed	
Frequency	8.1	8.1	7.8	Hz
Overswing Ratio	3.8	3.5	3.8	

Wisconsin Administrative Code



Time Scale: 0.20 sec/div **Amplitude Scale:** Geo: 0.020 in/s/div Mic: 0.001 psi(L)/div
Trigger =

Sensor Check