

**Date/Time** Tran at 1:31:58 PM April 23, 2020  
**Trigger Source** Geo: 0.040 in/s, Mic: 130.0 dB(L)  
**Range** Geo: 10.000 in/s  
**Record Time** 3.0 sec at 1024 sps  
**Job Number:** 1

**Serial Number** BA11291 V 10.72-8.17 BlastMate III  
**Battery Level** 6.1 Volts  
**Unit Calibration** December 2, 2019 by InstanTel  
**File Name** \_\_TEMP.EVT

**Notes**

**Location:** N 43 06 00.9 W 089 13 33.1 .24 S  
**Client:** Bjoin Limestone Homberg  
**User Name:** Cap Eadie  
**General:**

**Extended Notes**

3019 Red Hawk Rd

**Microphone** Linear Weighting

**PSPL** 112.8 dB(L) at 0.568 sec

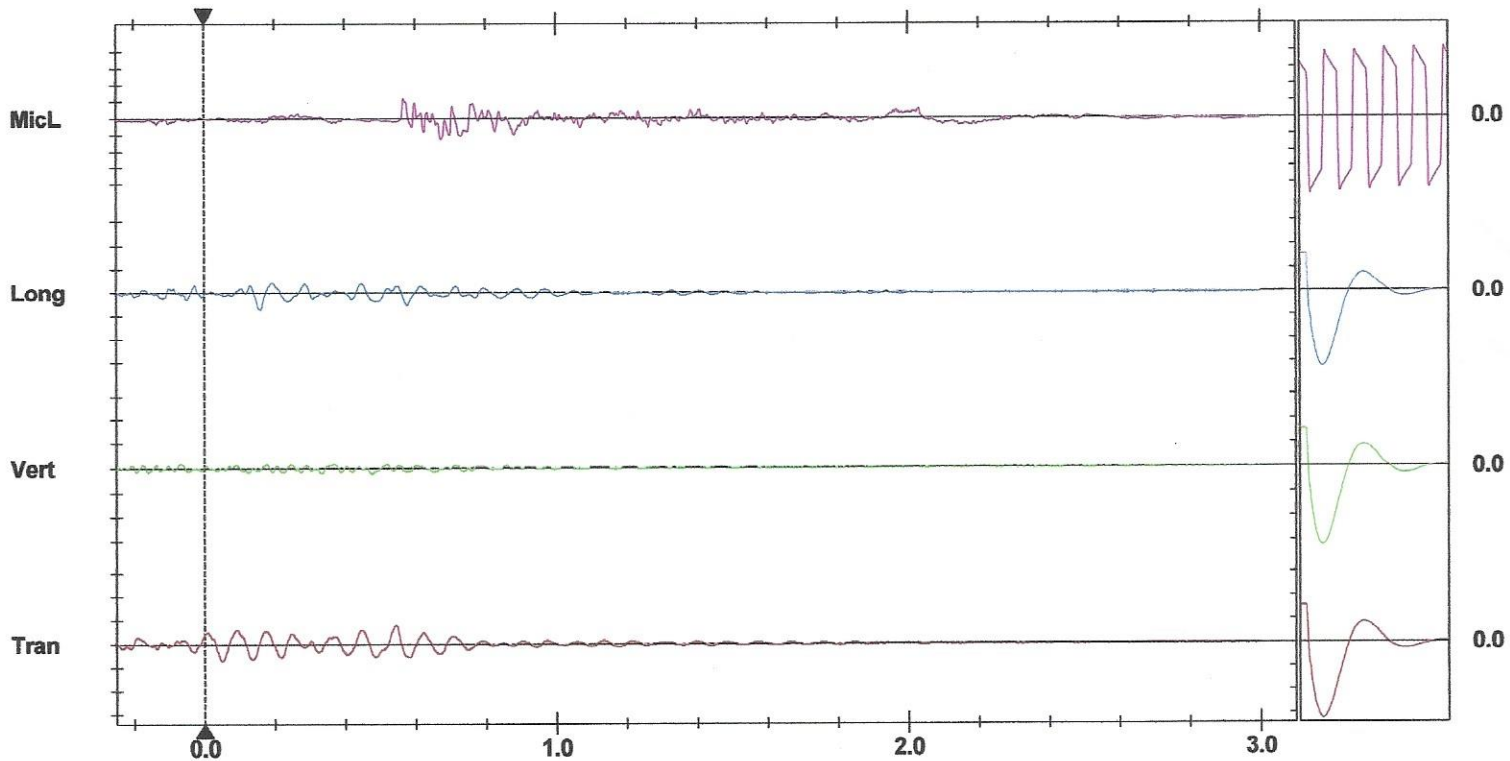
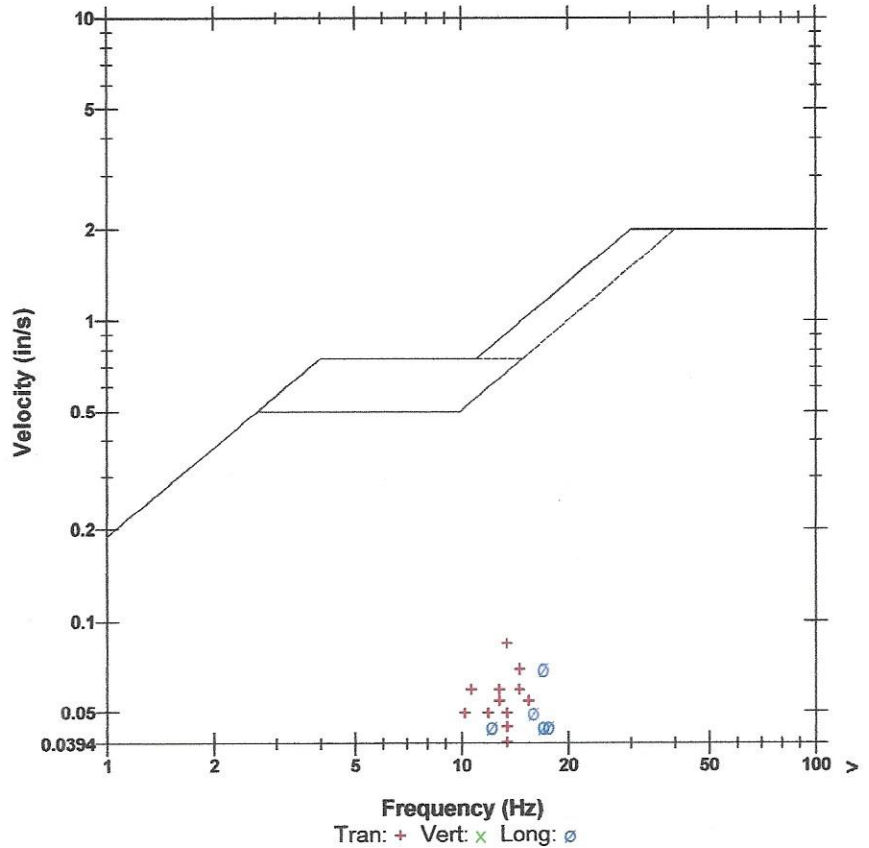
**ZC Freq** 24 Hz

**Channel Test** Passed (Freq = 20.1 Hz Amp = 639 mv )

	Tran	Vert	Long	
PPV	0.085	0.020	0.070	in/s
ZC Freq	13	27	17	Hz
Time (Rel. to Trig)	0.545	-0.069	0.160	sec
Peak Acceleration	0.027	0.027	0.027	g
Peak Displacement	0.001	0.000	0.001	in
Sensor Check	Passed	Passed	Passed	
Frequency	7.4	7.5	7.4	Hz
Overswing Ratio	3.7	3.6	4.0	

**Peak Vector Sum** 0.089 in/s at 0.545 sec

**USBM RI8507 And OSMRE**



**Time Scale:** 0.20 sec/div **Amplitude Scale:** Geo: 0.100 in/s/div Mic: 0.001 psi(L)/div  
**Trigger =**

Sensor Check

**Date/Time** Long at 1:31:58 PM April 23, 2020  
**Trigger Source** Geo: 0.040 in/s, Mic: 130.0 dB(L)  
**Range** Geo: 10.000 in/s  
**Record Time** 3.0 sec at 1024 sps  
**Job Number:** 1

**Serial Number** BA11047 V 10.72-8.17 BlastMate III  
**Battery Level** 6.1 Volts  
**Unit Calibration** January 10, 2020 by InstanTel  
**File Name** \_\_TEMP.EVT

**Notes**

**Location:** N 43 06 00.9 W 089 13 33.1 .30 N  
**Client:** Bjoin Limestone Homberg  
**User Name:** Cap Eadie  
**General:** 2865 Busston Rd.

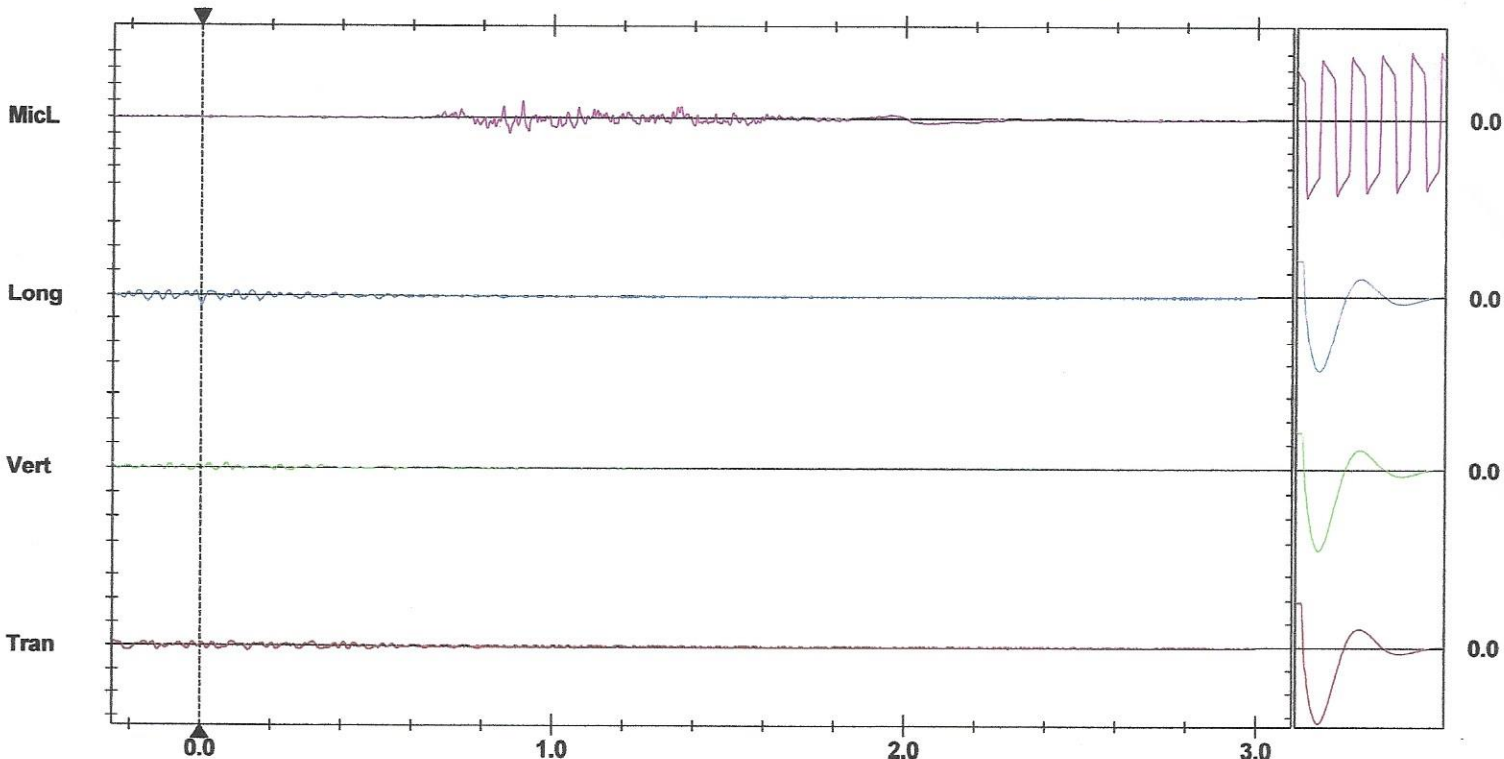
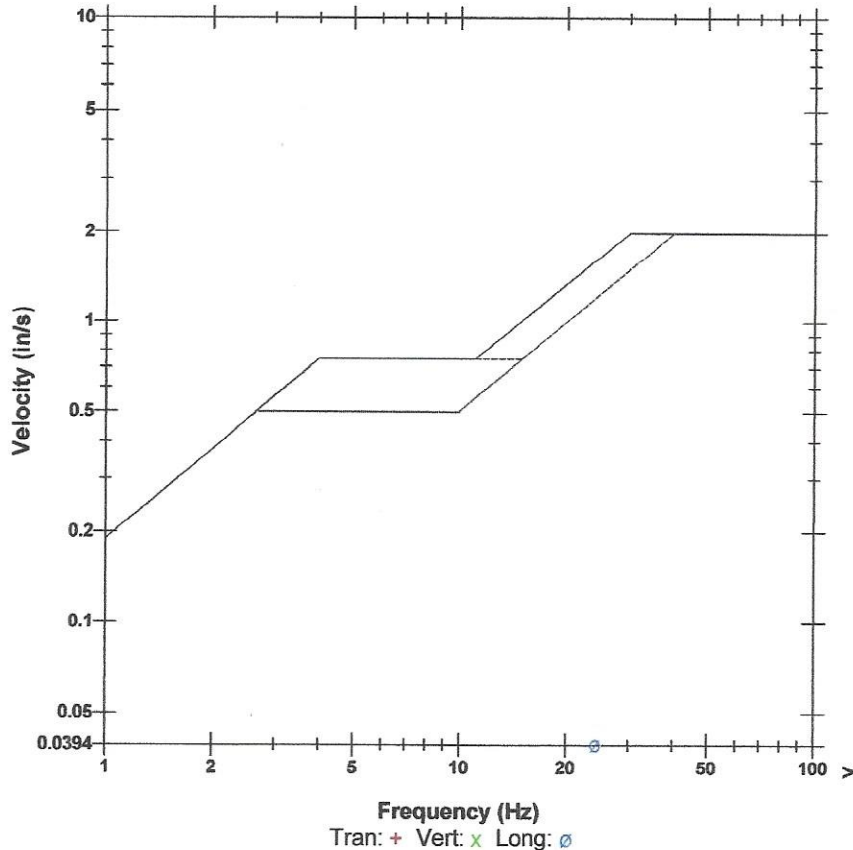
**Extended Notes**

**Microphone** Linear Weighting  
**PSPL** 111.5 dB(L) at 0.913 sec  
**ZC Freq** 37 Hz  
**Channel Test** Passed (Freq = 20.5 Hz Amp = 605 mv )

	Tran	Vert	Long	
PPV	0.020	0.020	0.040	in/s
ZC Freq	N/A	26	24	Hz
Time (Rel. to Trig)	-0.247	0.027	0.000	sec
Peak Acceleration	0.013	0.027	0.027	g
Peak Displacement	0.000	0.000	0.000	in
Sensor Check	Passed	Passed	Passed	
Frequency	7.4	7.4	7.3	Hz
Overswing Ratio	3.8	3.8	3.8	

**Peak Vector Sum** 0.043 in/s at 0.000 sec  
**N/A:** Not Applicable

**USBM RI8507 And OSMRE**



**Time Scale:** 0.20 sec/div **Amplitude Scale:** Geo: 0.100 in/s/div Mic: 0.001 psi(L)/div  
**Trigger =**

Sensor Check